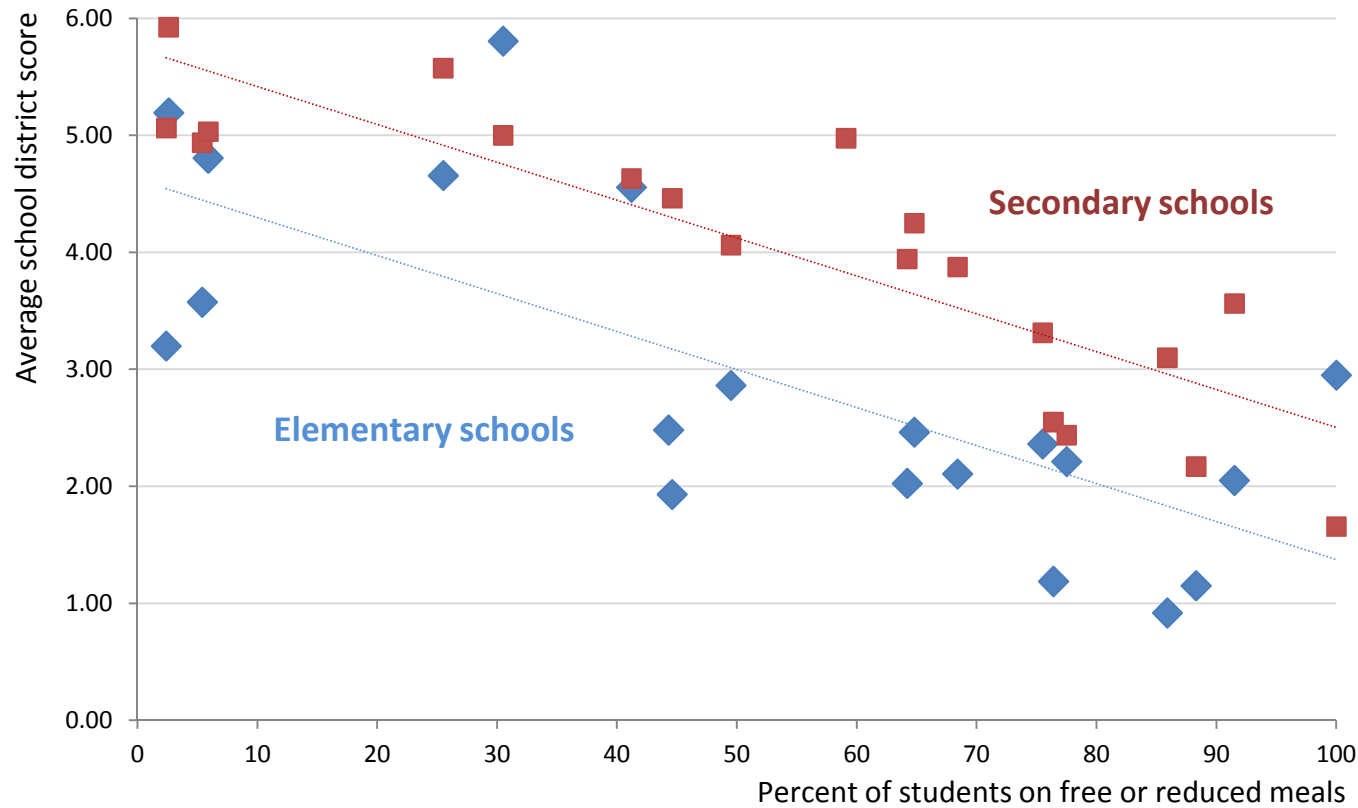


# Correlation between poverty and access to high quality arts education in Arts for All school districts

As measured by the School Arts Survey



## Key Findings

- School districts with more students on free/reduced meals have lower access to high quality arts education.
- This correlation is stronger in secondary schools (Pearson's  $r=0.87$ ) than elementary schools (0.73)
- Elementary school scores cluster in the 1.0-3.0 range, while secondary school scores are more dispersed.

## How to read this chart

- The School Arts Survey (SAS) is a measure of access to and quality of arts education at the school site
- Percent of students on free or reduced lunch is an indicator of poverty
- Each blue diamond represents all the elementary schools in a single school district
- Each red square represents all the secondary schools in a single school district
- 23 school districts in LA County have completed the SAS
- Keep in mind: *correlation* is not *causation*

